

///ATOM[®]

PATENTED WORLD'S BEST LAWN EDGERS

Model 205AV

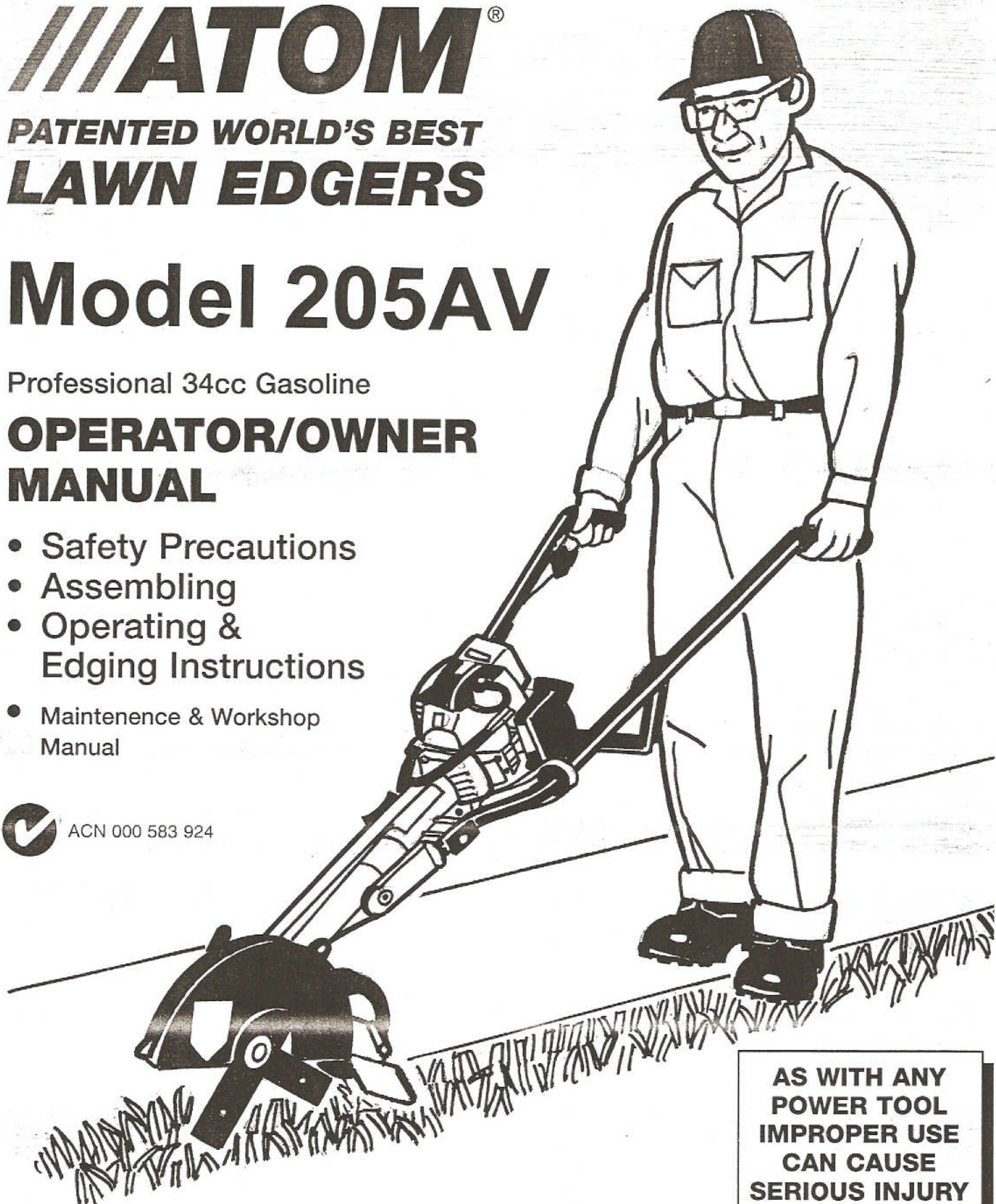
Professional 34cc Gasoline

OPERATOR/OWNER MANUAL

- Safety Precautions
- Assembling
- Operating & Edging Instructions
- Maintenance & Workshop Manual



ACN 000 583 924



**AS WITH ANY
POWER TOOL
IMPROPER USE
CAN CAUSE
SERIOUS INJURY**

MAKE SURE THIS
MANUAL IS READ
AND CAREFULLY
UNDERSTOOD
BEFORE STARTING
OR OPERATING
THIS EQUIPMENT

IMPORTANT MANUAL - DO NOT THROW AWAY

Manual always to be available for reference or instructing new operators.
Please fill in details of purchase on back cover page.

INTRODUCTION

This Atom Gasoline Powered Lawn Edger is designed to the highest standards to ensure you many hours of uninterrupted service.

Pay special attention to the safety precautions outlined on pages 2 to 5. Only persons who understand this Manual are to operate the Lawn Edger.

To receive maximum performance and satisfaction from your Lawn Edger, it is important that you read and understand the maintenance and safety precautions before using the edger. Contact your Atom dealer or the Atom distributor in your area if you do not understand or cannot carry out any of the operating instructions in this Manual.

Atom's philosophy is to continually improve all of its products. As a result, engineering changes and improvements are made from time to time. If the operating characteristics or the appearance of your Atom Edger differs from those described in this manual, please contact your Atom dealer for information and assistance. Call (02) 9810 0194 (within Australia) for your nearest servicing dealer.

NOTE: OUTSIDE AUSTRALIA REFER TO BACK COVER PAGE



SAFETY WARNINGS

THE PURPOSE OF SAFETY WARNING AND NOTES IN THIS MANUAL IS TO ATTRACT YOUR ATTENTION TO POSSIBLE

DANGERS AND THE EXPLANATIONS WITH THEM DESERVE YOUR CAREFUL ATTENTION AND UNDERSTANDING. THE SAFETY WARNINGS IN THIS MANUAL AND ON THE EDGER DO NOT, BY THEMSELVES, ELIMINATE ANY DANGER. THE INSTRUCTIONS OR WARNINGS THEY GIVE ARE NOT SUBSTITUTES FOR PROPER ACCIDENT PREVENTION MEASURES.



WARNING

Failure to obey a safety warning can result in injury to yourself and others.

! NOTE

Advises you of information or instructions vital to the operation or maintenance of the equipment.

CONTENTS

Parts and Controls	2-3
Safety Precautions	3-5
Assembling the Lawn Edger.	6
Fuel Mix and Fueling	6
Starting and Stopping Instructions.	7-8
Edging Instructions.	8-10
Maintenance Instructions	
Blade Replacement	10
Lubrication of Gears	11
Spark Plug	11
Air Filter Maintenance	11
Removing Blade Cover	11
Carburettor Adjustment	12
Trouble Shooting tips	13, 18-19
Parts List and exploded View	14-17
Included at the rear of this manual is a complete workshop manual which is information for persons with suitable servicing experience should this unit ever require workshop repair	20-23
Warranty	24

PARTS & CONTROLS

- 1,2 The **handles** of the Lawn Edger are held by both hands.
- 3 The **throttle trigger** which increases speed of engine for automatic safety clutch to engage and thus rotate blade.
- 4 **ON/STOP** switch.
- 5 **Starter grip** the grip of the pull starter which is the device to start the engine.
- 6 **Handle nut** for holding handles onto housing.
- 7 **Height adjustment** for adjusting depth of cutting blade.
- 8 **Blade cover** reduces the risk of flying debris and direct contact with the feet or hands.
- 9 **Sight guide** for edging.
- 10 **Cutter blades** rotate when engine speed is increased above idle.
- 11 **Grass shield** debris deflector reduces flyback of stones and foreign material.
- 12 **Wheel** for moving and guiding edger.
- 13 **Cross Brace**, attaches downward on handle.
- 14 Left and right **Handle Tubes**.
- 15 **Fuel cap**, for sealing the fuel tank filler.
- 16 **Fuel Tank**.
- 17 **Choke lever** for cold engine starting.
- 18 **Filter housing** covers the air filter element.
- 19 **Muffler** reduces exhaust noises and diverts gases away from operator.
- 20 **Spark Plug terminal cap** connects the spark plug to the ignition wire
- 21 **Fuel pump primer** under carburettor provides additional fuel for starting.
- 22 **Warning Label**, on left handle.
- 23 **Front Round Anit-Vibration Mounting**.
- 24 **Rear Round Anit-Vibration Mounting** (both sides).
- 25 **Twin Saddle AV Mounting** (both sides).
- 26 **Warning Label**, on blade guard.

PARTS & CONTROLS (CONTINUED)

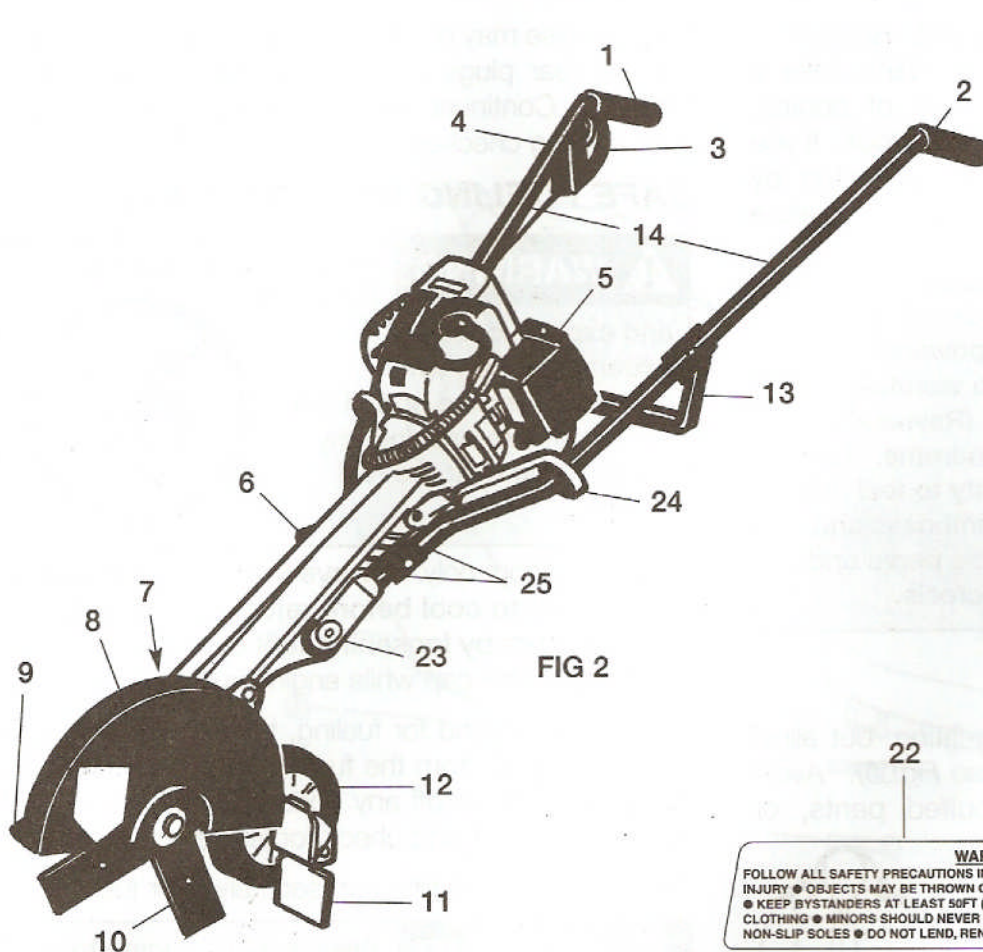
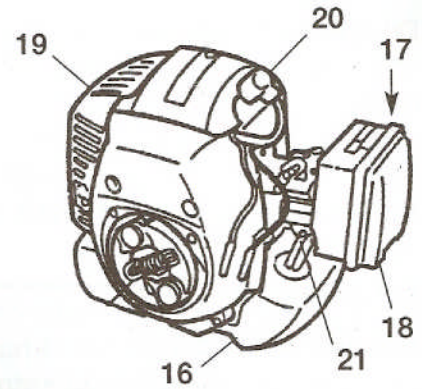


FIG 2



WARNING - TO PREVENT SERIOUS INJURY
 FOLLOW ALL SAFETY PRECAUTIONS IN OPERATOR MANUAL - IMPROPER USE CAN CAUSE SERIOUS OR FATAL INJURY ● OBJECTS MAY BE THROWN OR RICOCHET IN ALL DIRECTIONS - ALWAYS WEAR EYE PROTECTION ● KEEP BYSTANDERS AT LEAST 50FT (16M) AWAY ● ALWAYS WEAR EAR PROTECTION ● WEAR SNUG FITTING CLOTHING ● MINORS SHOULD NEVER BE PERMITTED TO USE THIS EDGER ● WEAR STURDY SHOES WITH NON-SLIP SOLES ● DO NOT LEND, RENT OR SELL THIS EDGER WITHOUT THE OPERATOR MANUAL.

SAFETY PRECAUTIONS

WARNING As with any power tool, the use of any lawn edger may be dangerous. It is important that you read, fully understand, and observe the following safety precautions and warnings. Re-read this operator's manual and the safety instructions periodically.

WARNING Do not lend, rent or sell this machine without the operator's manual. Be sure that anyone using this unit understands the information contained in this manual before use.

WARNING As with any power tool, some special safety precautions must be observed to reduce the risk of personal injury. Careless or improper use may cause serious or even fatal injury.

THE OPERATOR

PHYSICAL CONDITION

Operator must be in good physical condition and mental health, and not under the influence of any substance (drugs, alcohol, etc.) which might impair vision, dexterity or judgement (Fig. 3).



FIG 3

WARNING This Lawn Edger must not be operated by minors. Bystanders, especially children and animals, should not be allowed in the area where a machine is in use at least 15 metres (50 feet) away (Fig. 4). Never let the unit run unattended.



FIG 4

WARNING Electrical shock. Never touch electrical wires or components while the engine is running. They are sources of high voltage and can give you an electrical shock. Replace immediately any faulty tension lead or spark plug cap.

Safe use of an Atom Lawn Edger involves:

1. The Operator
2. The Atom Edger
3. The use of the Atom Edger

SAFETY PRECAUTIONS (CONTINUED)

Do not operate the Edger when fatigued. Be alert - if you get tired while operating the machine, take a break. Tiredness may result in loss of control. Working with any power tool can be strenuous. If you have any condition that might be aggravated by strenuous work, check with your doctor before operating the machine.

! WARNING Prolonged use of any hand-held powered machine exposing the operator to vibrations may produce whitefinger disease (Raynaud's phenomenon) or carpal tunnel syndrome. These conditions reduce the hand's ability to feel and regulate temperature, produce numbness and burning sensations, and may cause nerve and circulation damage and tissue necrosis.

PROPER CLOTHING

Clothing must be sturdy and snug-fitting, but allow complete freedom of movement (see Fig. 5). Avoid loose-fitting jackets, flared or cuffed pants, or anything that could trip the operator. Wear overalls or long pants to protect your legs. **DO NOT** wear shorts. Use of gloves when working with the Lawn Edger is recommended.

Good footing is most important. Wear sturdy shoes with nonslip soles. **DO NOT** wear

FIG 5



sandals or operate with bare feet. In hot or sunny conditions, always wear a hat and long sleeve shirt for protection against skin cancers. Use of a good brand of sunscreen cream is also recommended on exposed skin surfaces.

! WARNING Proper eye protection is a must. The blade cover may not protect the operator from all fast moving foreign objects, even though the discharge is directed away from the operator, as ricochets and bouncebacks may occur during lawn edging operations. Never operate an Atom Edger unless wearing goggles or properly fitting safety glasses with adequate top and side protection which comply with ANSI Z 87.1.

Replace immediately broken or cracked blade covers and grass shield debris deflector.

Engine noise may damage your hearing. Wear sound barriers (ear plugs or ear muffers) to protect your hearing. Continual and regular users should have their hearing checked regularly.

SAFE FUELING INSTRUCTIONS

! WARNING Gasoline is an extremely flammable and explosive fuel. Use extreme caution when handling gasoline or fuel mix. Do not smoke or bring any fire or flame near the fuel (Fig.6).



Refuel outdoors only. Always switch off the engine and allow it to cool before refueling. Relieve fuel tank pressure by loosening fuel cap slowly. Never remove fuel filler cap while engine is running.

Select bare ground for fueling, then move at least 3 metres (10 feet) from the fueling spot before starting the engine. Wipe off any spilled fuel before starting your Atom Edger and check for leakage.

Always tighten fuel filler cap securely after fueling.

! WARNING Always allow engine to cool before refueling. Accidental spillage of gasoline over hot engine could cause fire or explosion to occur with consequent possible disfigurement or fatal injury. Wash and clean hands after fueling.

The Atom Edger unit uses an oil-gasoline mixture for fuel (Refer "Fuel Mix and Fuelling," page 6).

SAFE STARTING

You should always inspect your unit before starting it. Make sure the controls and safety devices are working properly.

As the throttle trigger is fitted with a 1/2 throttle lock to assist in starting the engine, **NEVER leave 1/2 throttle lock on, other than for starting.** For specific starting instructions refer to Page 7.

Place the machine on firm ground or other solid surface in an open area. Maintain good balance and secure footing.

! NOTE When you pull the starter grip, do not wrap starter rope around your hand. Do not allow grip to snap back, but guide starter rope slowly back to permit rope to rewind properly.

SAFETY PRECAUTIONS (CONTINUED)

Failure to follow this procedure may result in injury to hand or fingers or may damage the starter mechanism.

! WARNING The Atom Edger is a one-person machine. To reduce the risk of eye or other injury from thrown objects, ensure that bystanders are at least 15 metres (50 feet) away during use. Replace immediately any worn or broken debris deflector shield or blade cover. If approached, release throttle trigger to immediately de-accelerate the engine.

SAFE WORKING INSTRUCTIONS AND IMPORTANT ADJUSTMENTS

Never operate your machine if it is damaged, improperly adjusted or not completely and securely assembled. At correct idle speed, the blade should not turn. Do not use the Atom Edger with incorrect idle speed; refer speed setting instructions on page 12.

SAFE MAINTENANCE, REPAIR AND STORING

Use only original Atom replacement parts for maintenance and repair. Use of parts manufactured by others will void warranty and/or may cause serious or fatal injury.

! WARNING Always stop the engine, make sure that the blade is stopped, and disconnect the spark plug before adjusting blade height, doing any maintenance or repair work, or cleaning the unit or blade.

Follow the maintenance instructions in the appropriate section of this manual. Any repairs should be carried out by an authorized service dealer or person with suitable servicing experience.

! WARNING A worn or damaged muffler is a fire hazard and may cause loss of hearing. Check to see that the muffler is in good condition. The lawn edger must not be operated if the muffler is not functioning properly, is damaged, or has been removed. In order to reduce the risk of fire, do not modify or remove any part of the muffler and ensure it is not worn or broken.

Remember that the risk of forest or grass fires is greater in hot weather.

Check fuel filler cap for leaks at regular intervals. Use the specified spark plug and make sure it and the ignition lead are always in good condition.

! WARNING Never touch a hot muffler as burns will result.

Store Atom Edger in a dry, high or locked location and out of reach of children.

! WARNING Never store the machine with gasoline inside a building where fumes may reach an open flame or spark (e.g. gas or oil-fired heater appliance, electric motor, etc.).

Before storing for a longer period, always empty the fuel tank.

! WARNING Start and operate your unit outdoors and in a ventilated area.

Keep the space behind and beside the engine clear at all times to allow for the escape of hot and toxic exhaust fumes.

Operate your machine under good visibility and daylight conditions only. Work carefully.

! WARNING The engine exhaust from this product contains chemicals known to the State of California to cause cancer, birth defects or other reproductive harm.

SAFE WORKING CONDITIONS

When working with the Atom Edger, always wrap your fingers tightly around each handle. Keep your hands in this position to have your machine under control at all times. NEVER attempt to operate the Atom Edger with one hand, as a loss of control may result in serious or fatal injury.

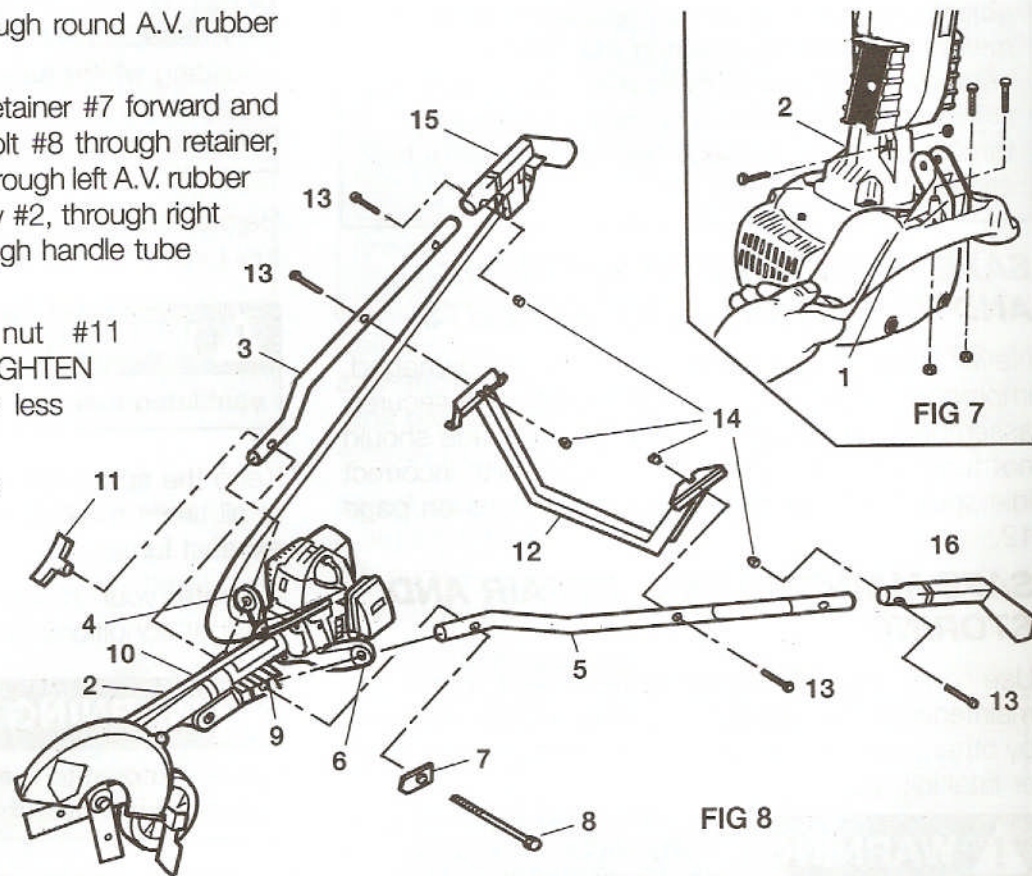
Make sure the handle grips are in good condition and free of moisture, pitch, oil or grease. Use both hands, one on each handle, to operate and control the lawn edger. Do not overreach. Keep proper footing and balance at all times.

! WARNING Do not touch hot engine during and immediately after use as you may burn yourself.

ASSEMBLING THE //ATOM LAWN EDGER

1. Fit A.V. handle brace #1 to main body #2 (fig.7) with screws and nuts provided. Use straight bladed screwdriver or torx 25 driver.
2. Slide right handle tube #3 through round A.V. rubber mount #4.
3. Slide left handle tube #5 through round A.V. rubber mount #6.
4. Point black female hex bolt retainer #7 forward and insert the 150mm (6") hex bolt #8 through retainer, through left handle tube #5, through left A.V. rubber saddle #9, through main body #2, through right A.V. rubber saddle #10, through handle tube #3.
5. Screw on handle wing nut #11 sufficiently. **DO NOT OVERTIGHTEN** wing nut as A.V. becomes less effective.
6. Fit handle cross-brace #12 to handle tubes #3 and #5. Use 2 screws #13 and 3 lock nuts #14 provided.
7. Insert trigger handle #15 into right handle tube #3 using one screw #13 and one nut #14 to hold into place. **NOTE:** Throttle cable/switch wire from engine must be fitted

8. Insert left handle #16 into left handle tube #5 using one screw #13 and one nut #14 to hold in place.



FUEL MIX AND FUELING

! WARNING DANGER!

FUEL IS EXTREMELY FLAMMABLE. HANDLE IT WITH CARE. KEEP AWAY FROM IGNITION SOURCES. DO NOT SMOKE WHILE FUELING YOUR EQUIPMENT.

Your Atom Edger is powered by a two-stroke, air cooled engine which requires a fuel mixture of gasoline and two-cycle oil that is used for air-cooled engines.

Do not use 2-cycle oil that is used in water-cooled engines (e.g. outboard motors).

FUEL MIX RATIO

Use a mixture of 32 parts unleaded regular gasoline and 1 part two-cycle oil of good quality such as Castrol 2T 2-cycle oil or equivalent.

Only mix sufficient fuel for a few weeks work and store in an approved safety type container. pour oil in

first, 125ml for every 4 litres of gasloine. Add gasoline. Screw the fuel can cap on tightly and shake the mixture before fueling your machine.

! WARNING Pressure may build up in the canister. Remove fuel cap slowly to avoid injury from fuel spray. Replace fuel cap securely. Take care when handling gasoline. Avoid direct contact with the skin and avoid inhaling fuel vapor.

Before fueling the edger, clean the filler cap and the area around it to ensure that no dirt falls into the tank. **Never mix the gasoline and oil in the fuel tank of the edger.**

! WARNING Always allow engine to cool before refueling. Accidental spillage of gasoline over a hot engine could cause fire or explosion to occur. See Page 4 - Safety Precautions, Fueling.